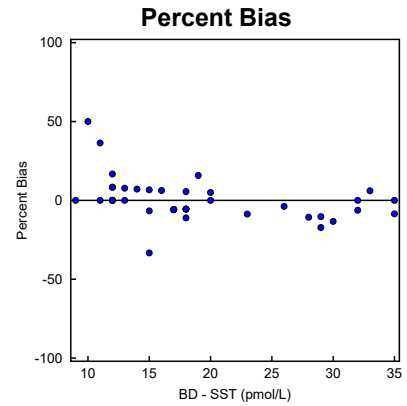
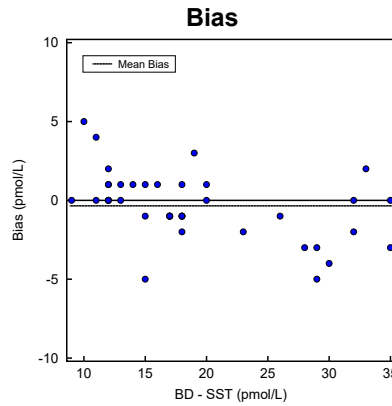
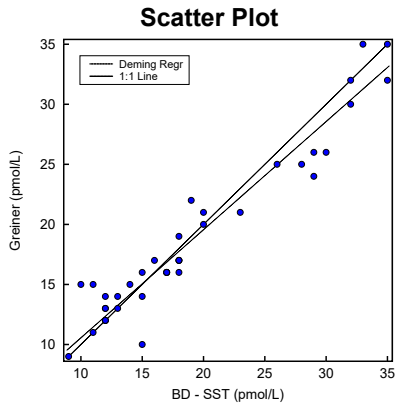


## Alternate Method Comparison

X Method: **BD - SST**

Y Method: **Greiner**



### Regression Analysis

	Deming	Regular
<b>Slope:</b>	0.901 (0.820 to 0.981)	0.870 (0.790 to 0.951)
<b>Intercept:</b>	1.5 (-0.1 to 3.2)	2.1 (0.5 to 3.8)
<b>Std Err Est:</b>	1.9	1.9

95% Confidence Intervals are shown in parentheses

### Supporting Statistics

Corr Coef (R): 0.9629	Points (Plotted/Total): 40/40
Bias: -0.3	Outliers: None
XMean ± SD: 19.1 ± 7.7	Degrees Freedom: 38
YMean ± SD: 18.7 ± 6.9	Scatter Plot Bounds: None
Std Dev Diff: 2.1	
SubRange Bounds: None	

### Experiment Description

	X Method	Y Method
ExptDate:	03 Feb 2003	03 Feb 2003
Rep SD:	1	1
Result Ranges:	9 to 35	9 to 35
Units:	pmol/L	pmol/L
Analyst:	DIS	DIS
Comment:		

Accepted by: \_\_\_\_\_

Signature

Date

Prepared for: Biochemistry Division -- Ottawa Civic Hospital

By: Technical Marketing -- greiner-bio-one

## Alternate Method Comparison

**X Method: BD - SST**

**Y Method: Greiner**

### Experimental Results

Specimen	X	Y	Bias	Specimen	X	Y	Bias	Specimen	X	Y	Bias
S00001	18	17	-1	S00015	18	16	-2	S00029	12	13	1
S00002	26	25	-1	S00016	20	21	1	S00030	15	16	1
S00003	13	14	1	S00017	18	17	-1	S00031	13	13	0
S00004	11	11	0	S00018	10	15	5	S00032	35	32	-3
S00005	30	26	-4	S00019	17	16	-1	S00033	17	16	-1
S00006	15	14	-1	S00020	32	30	-2	S00034	17	16	-1
S00007	9	9	0	S00021	19	22	3	S00035	12	14	2
S00008	12	13	1	S00022	14	15	1	S00036	18	17	-1
S00009	11	15	4	S00023	29	26	-3	S00037	28	25	-3
S00010	32	32	0	S00024	12	12	0	S00038	33	35	2
S00011	12	12	0	S00025	17	16	-1	S00039	12	12	0
S00012	23	21	-2	S00026	20	20	0	S00040	29	24	-5
S00013	16	17	1	S00027	35	35	0				
S00014	18	19	1	S00028	15	10	-5				

Values with an "X" were excluded from the calculations. Outliers "O" were also excluded.